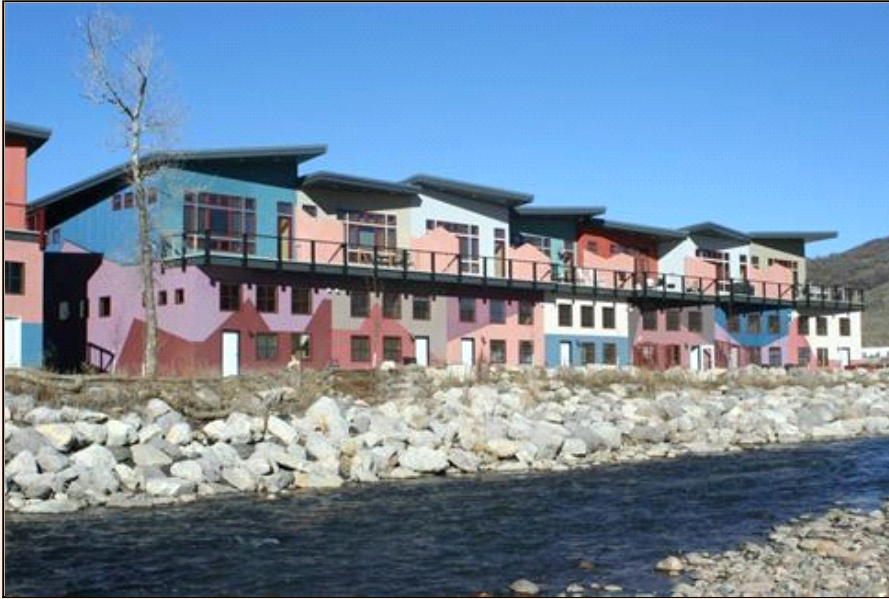


1920 Bridge Lane Unit #10 Steamboat Springs Home For Sale

Live, Work & PLAY! REDUCED!

PROPERTY DETAILS



Listing Price: **\$449,000**

Listing Address: 1920 Bridge Lane Unit #10
Steamboat Springs
CO 80487

Bedrooms: 2

Full Baths: 2

Partial Baths: 1

SQ FT: 2066

Style: Live/Work

Garage: 1 Car+

Heat Source: Gas

Schools: Strawberry Park

QR Code:

On a SmartPhone?
Scan the QR code
to see this listing



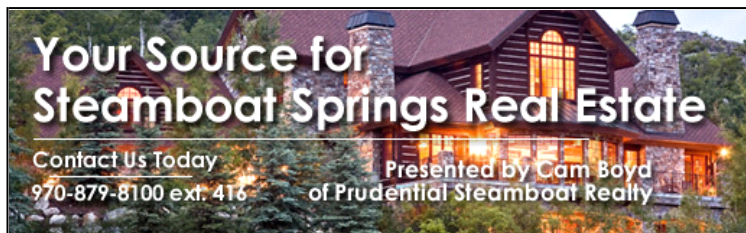
PROPERTY DESCRIPTION

Announcing the sale of a beautifully designed live/work unit at Riverfront Park. Imagine basking in the sun and soaking in the sounds of the Yampa River while living at this unique and convenient property. Your "9 to 5" daily commute will consist of a flight of stairs when you open for business from the comfort of your commercial space directly below the living quarters. The entry level leaves a lot of potential for creating a studio, workshop or built-out office while still leaving room for parking your vehicle. The upstairs living area is immaculate and topped off with stainless steel appliances in the kitchen, granite tile counters, picture windows, 2 bedrooms and 2 full bathrooms. The back balcony overlooks the Yampa River with lush trees, direct mountain views and lots of privacy while the Yampa River Core Trail is just steps away. If you've been considering a work-from-home business or need a place to host your commercial operation, this property packs a ton of value for a downtown location. Price **WAS** \$649,000

CONTACT INFORMATION



Cam Boyd
Prudential Steamboat Realty
steamboatagent.com
610 Marketplace Plaza, Suite 100
Steamboat Springs CO 80487
Office: 970-879-8100 x416
970-879-5928
CamBoyd@cmn.net



Equal Housing Opportunity

Property information deemed reliable but not guaranteed and should be verified.

Copyright © 2003-2012 Real Pro Systems LLC. All rights reserved.

